

the **BRIDGE**

# THE TOWNSEND

260 TOWNSEND STREET  
SAN FRANCISCO, CA

[BRIDGE.BRIDGETON.COM](http://BRIDGE.BRIDGETON.COM)

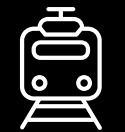




Within blocks of..



OUTDOOR SPACES



TRANSPORTATION



BARS & RESTAURANTS



WATERFRONT



RETAIL SHOPS



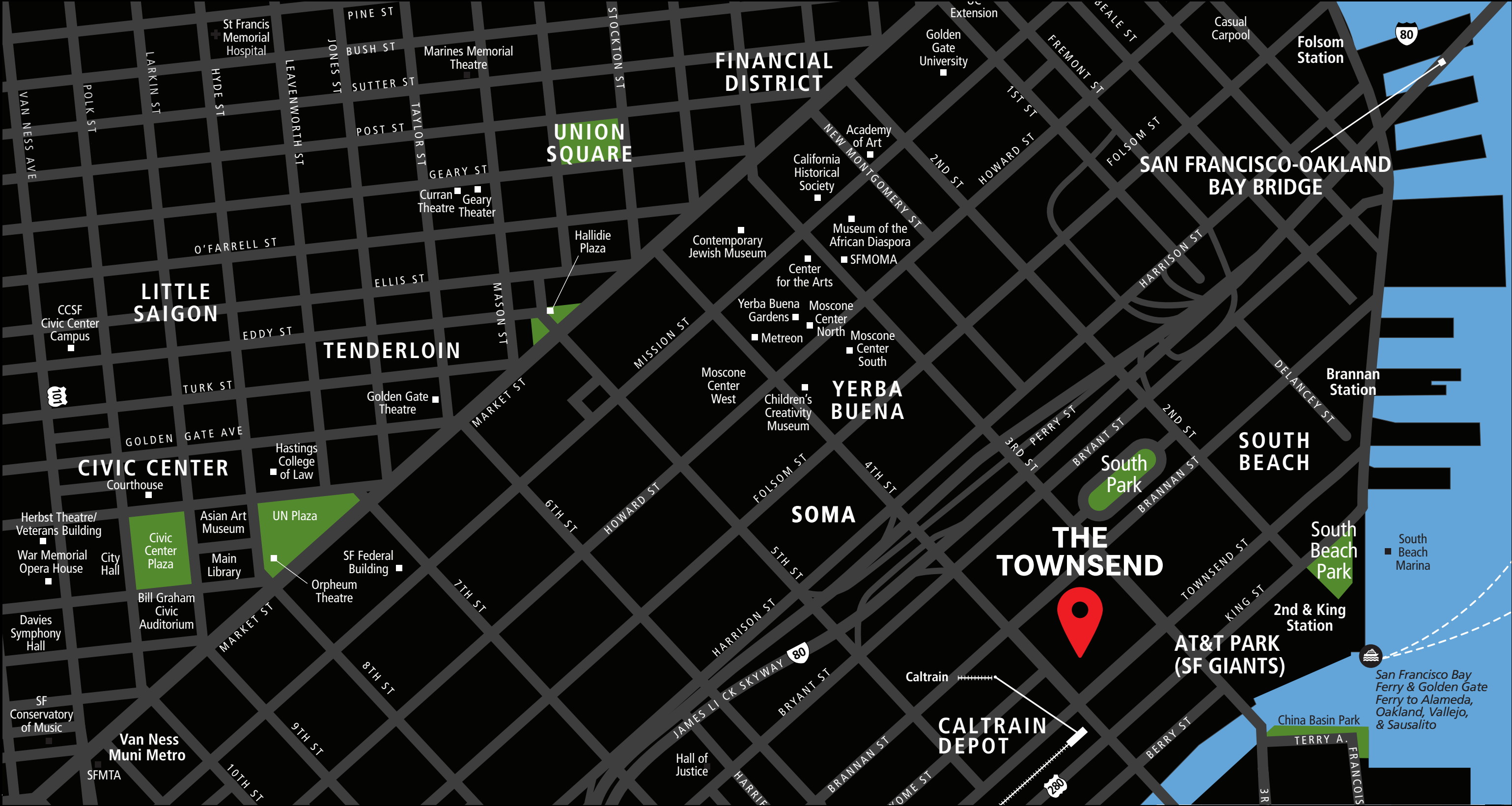
HOTELS

## Providing the best SoMa has to offer

The Townsend is a 7-story, 72,000 square feet creative building with a 73-spot attached parking garage in the centrally located SoMa district of San Francisco. The Townsend is prominently situated on the corner of Townsend Street and Lusk Street, and benefits from convenient transit access a 1 minute walk from the Caltrain station and within 3 minutes of the 80 and 280 Freeways. Located in the heart of SoMa, The Townsend has a walkscore of 95/100, highlighted by close proximity to the Embarcadero, Oracle Park, and the Chase Center.

Built in 1986 and renovated over the past 3 years the building features a 3-story glazed-glass lobby and 375 feet of frontage across Townsend Street and Lusk Street. Side-core floor plates offer open floor plans with abundant natural light and panoramic views of the San Francisco skyline. With 22,000 SF of expansive terraces on 5 floors, The Townsend capitalizes on outdoor space, views and creative buildouts.

# All Access, the Convenience of SoMa



We are ideally located near **AT&T Park**, the new Golden State Warriors **Chase Center**, with a one-minute walk to the San Francisco **Cal Train Station** and **Muni**, where you can easily travel anywhere in the Bay Area including to Silicon Valley.



# What's Next Door

## MUSEUMS

**SF MO  
MA**

SAN FRANCISCO MUSEUM OF MODERN ART  
151 3RD ST

**MOAD**

MUSEUM OF THE AFRICAN DIASPORA  
685 MISSION ST.



## LOCAL ATTRACTIONS

**ORACLE PARK**

HOME OF THE SAN FRANCISCO GIANTS



24 WILLIE MAYS PLAZA



601 MISSION BAY BOULEVARD NORTH

**CHASE CENTER**

1 WARRIORS WAY



## COFFEE SHOPS



201 BERRY ST.

**LENTO**  
S.F.C.A.  
**COFFEE**

242 TOWNSEND ST.



298 KING ST.



## RESTAURANTS & BARS



DISTRICT SAN FRANCISCO  
216 TOWNSEND ST.

**25 LUSK**

25 LUSK BAR & LOUNGE  
25 LUSK ST.



LOCAL TAP  
600 3RD ST.



ALCHEMIST BAR & LOUNGE  
679 3RD ST.

SAN FRANCISCO  
**MARLOWE**  
EST. 2010

500 BRANNAN ST.

**saison**

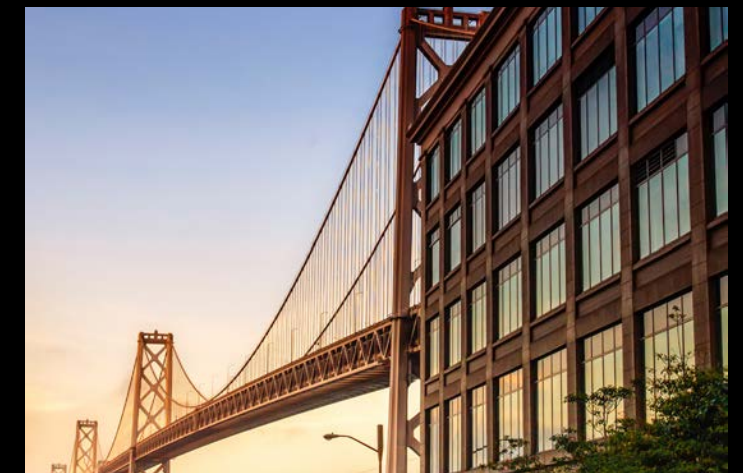
178 TOWNSEND ST.



701 3RD ST.



333 BRANNAN ST #150





Elevate  
Your  
Everyday

# Key Features

• AMPLE NATURAL LIGHT



• PREMIER, CORNER BUILDING IN PRIME SOMA LOCATION



• EFFICIENT SIDE-CORE FLOOR PLATES



• ADJACENT TO CALTRAIN AND 80 AND 280 FREEWAYS



• PANORAMIC VIEWS OF SAN FRANCISCO SKYLINE



• EXPANSIVE PRIVATE OUTDOOR TERRACES



• ON-SITE PARKING GARAGE



• ELECTRIC CHARGERS



• SHOWER ROOMS WITH TOWEL SERVICE

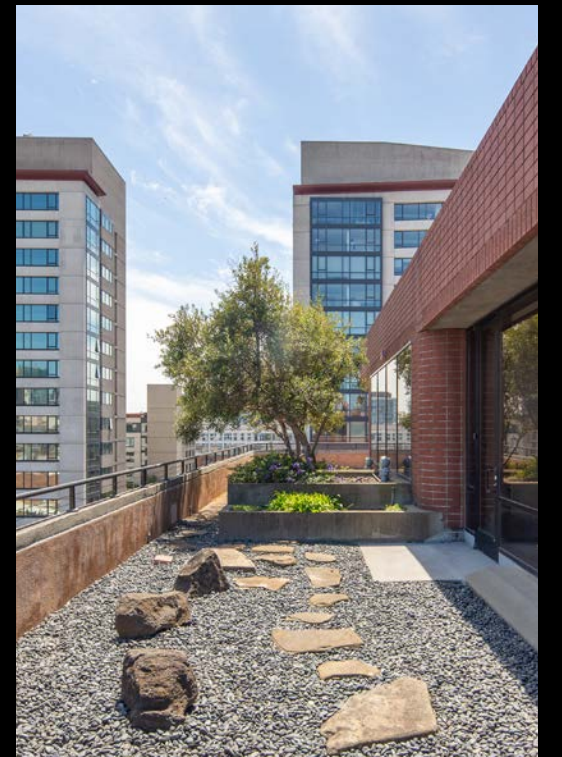
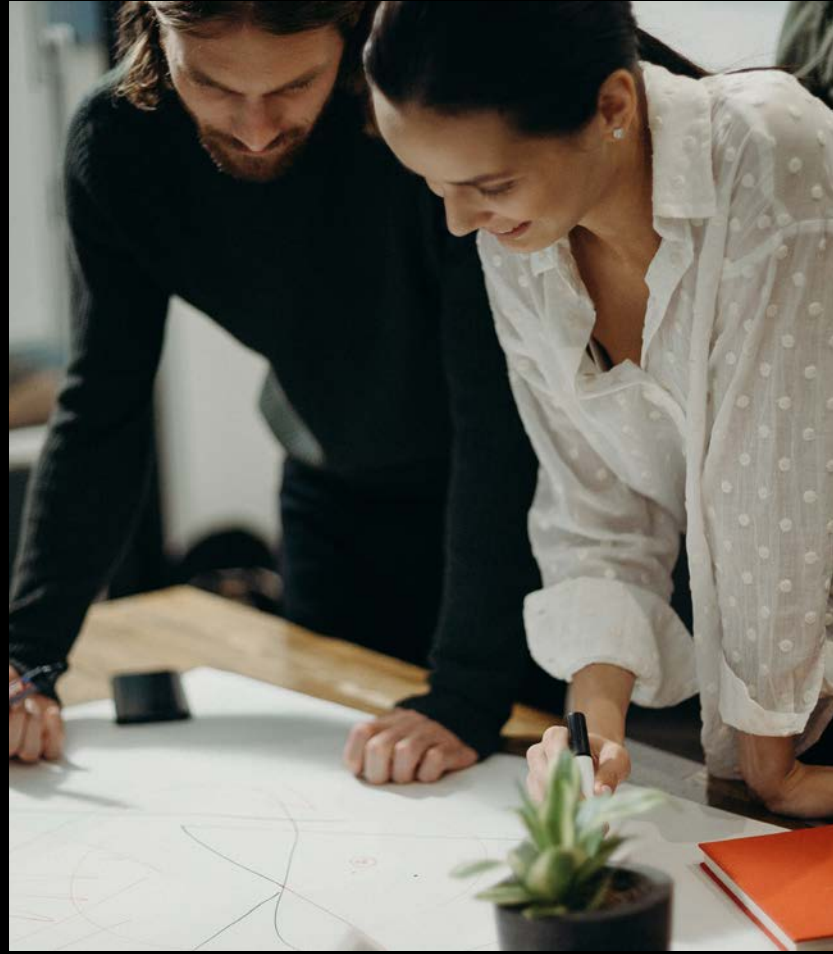


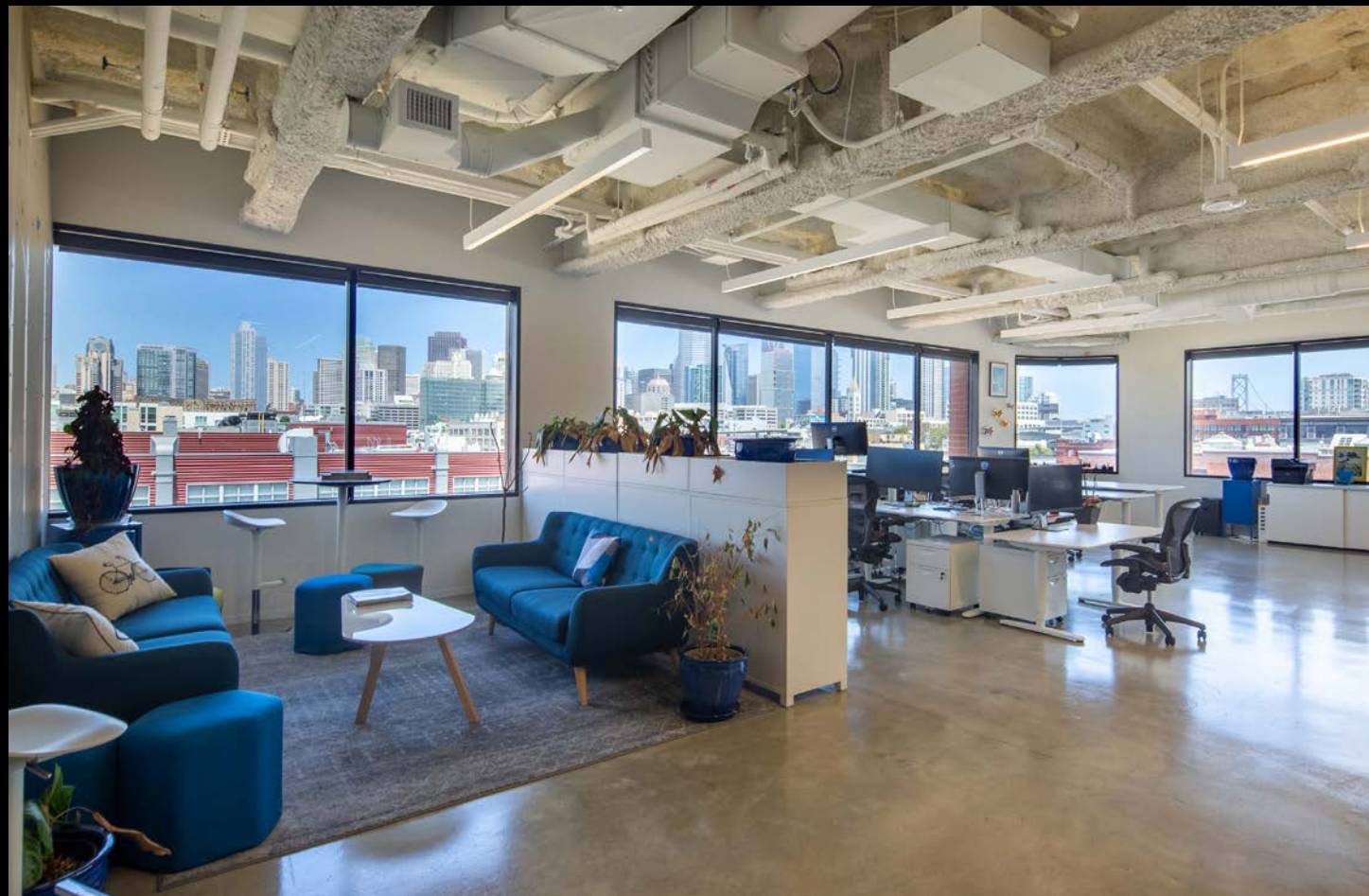
• 24/7 ACCESS



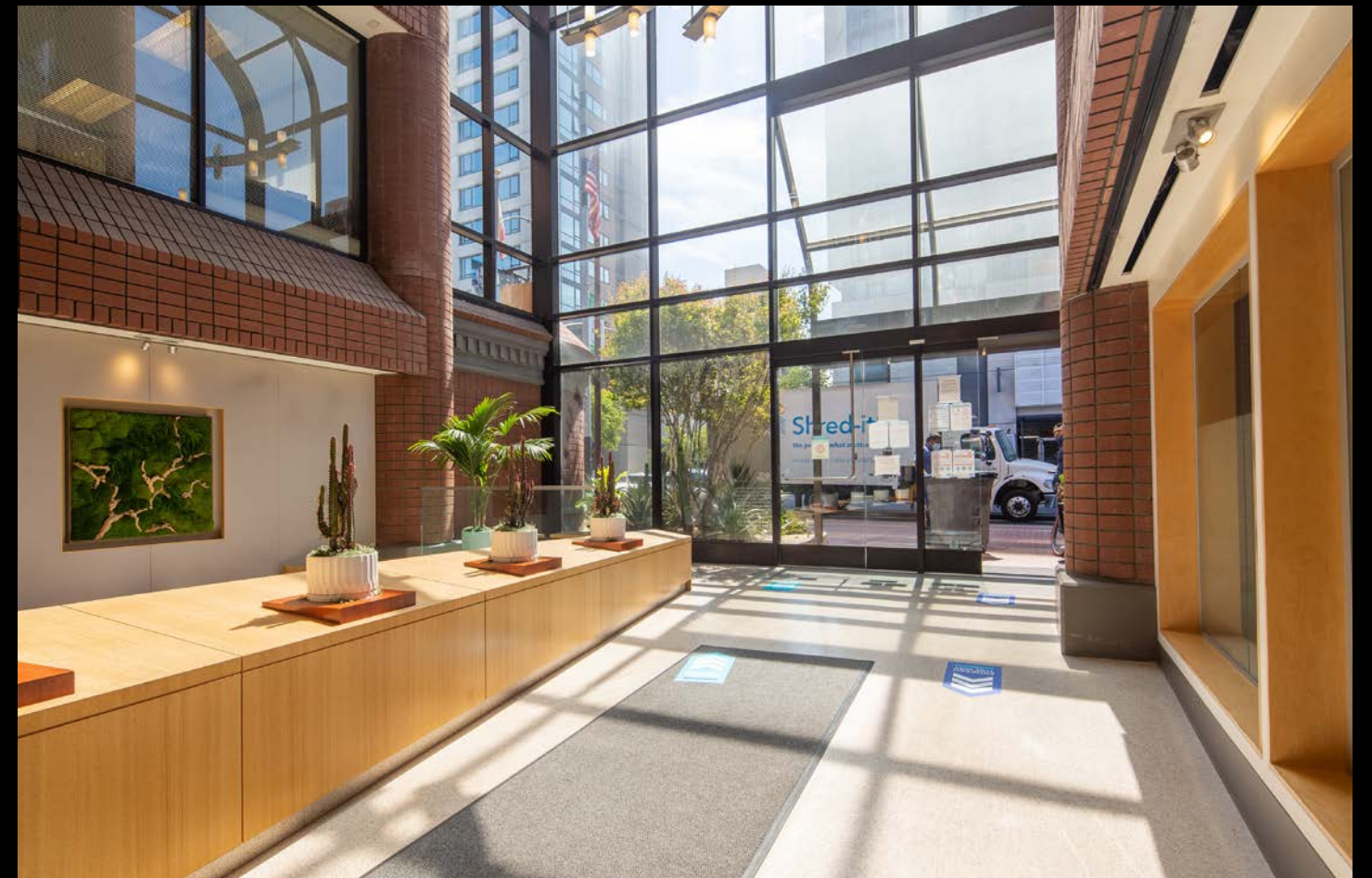
Work Global, Play Local

Amazing views of the San Francisco skyline





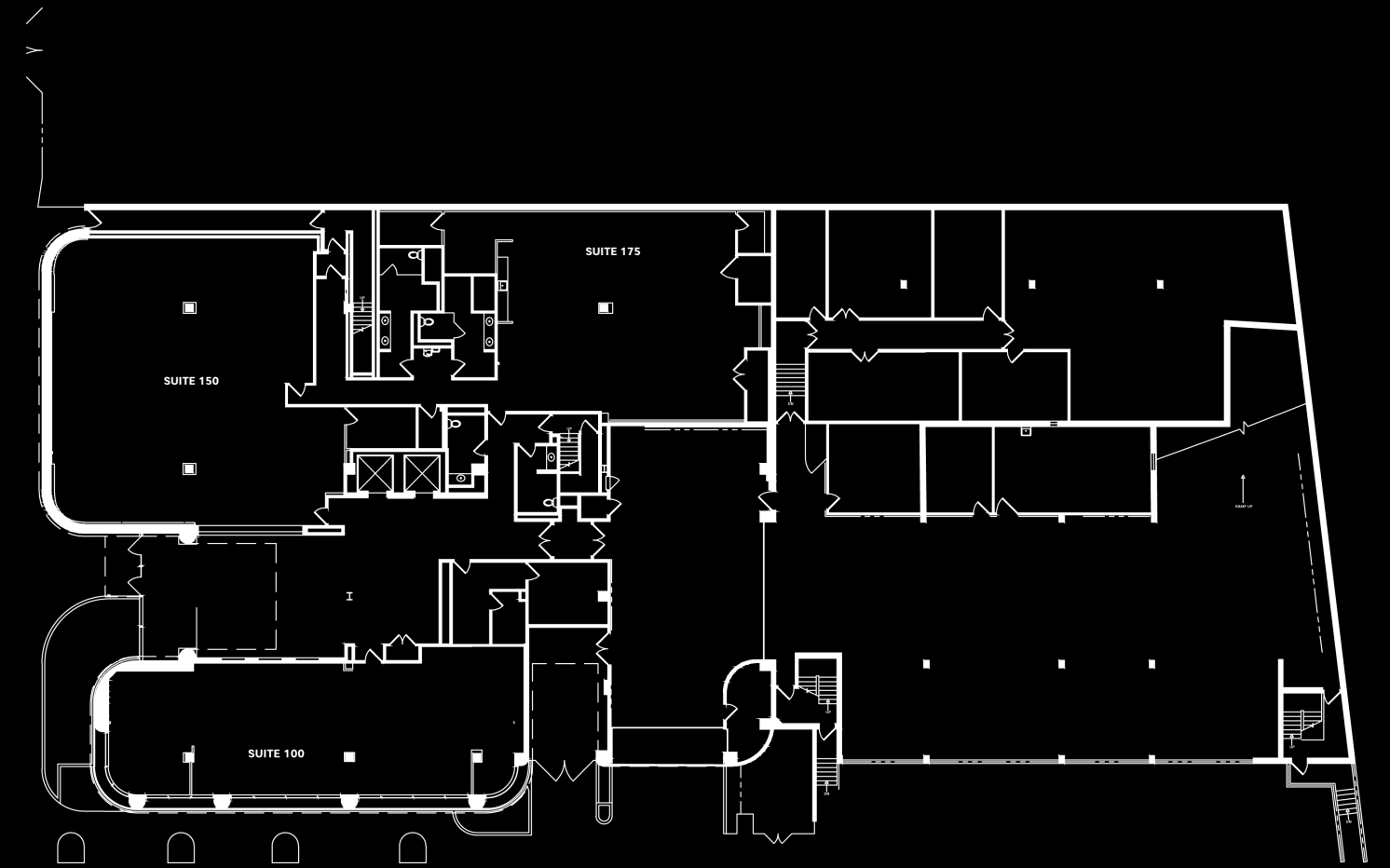




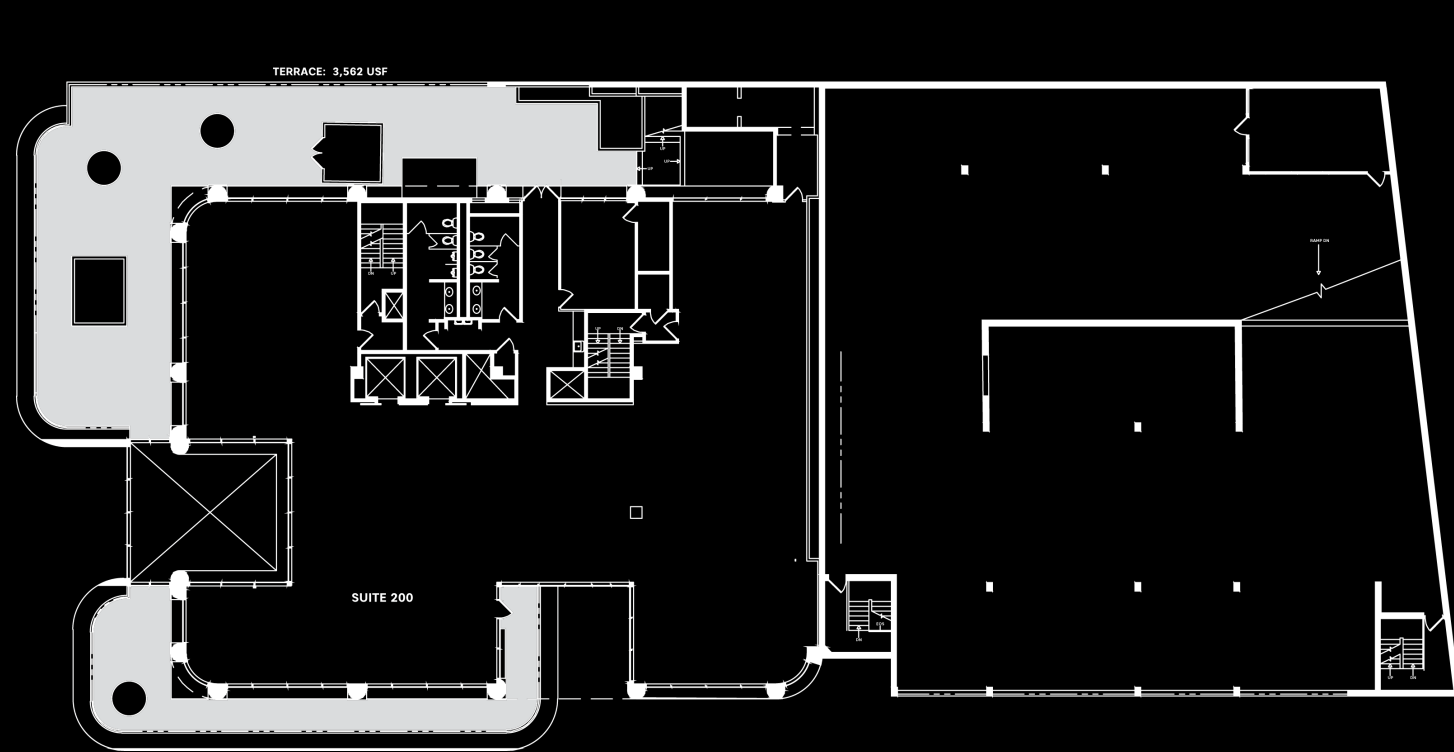


Make it  
Your Own

# Floorplans

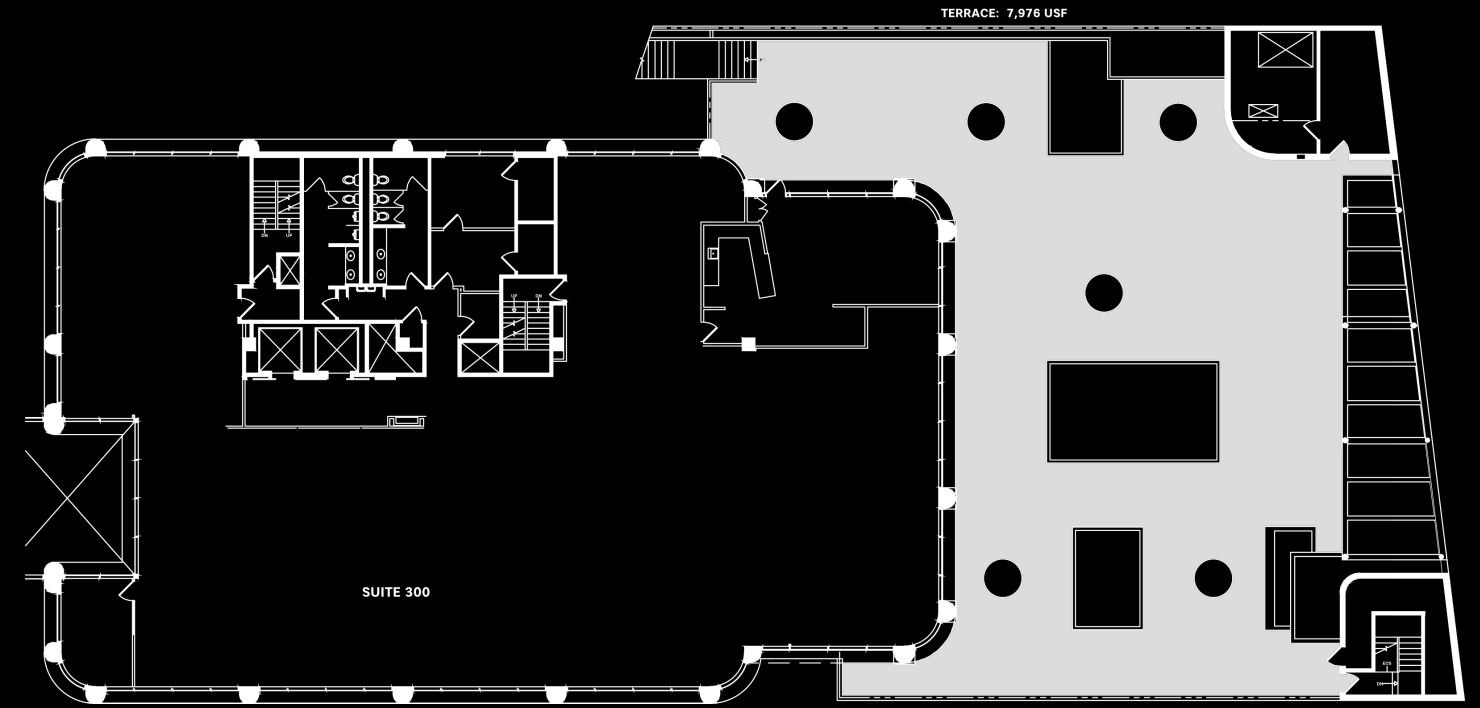


Floor 1



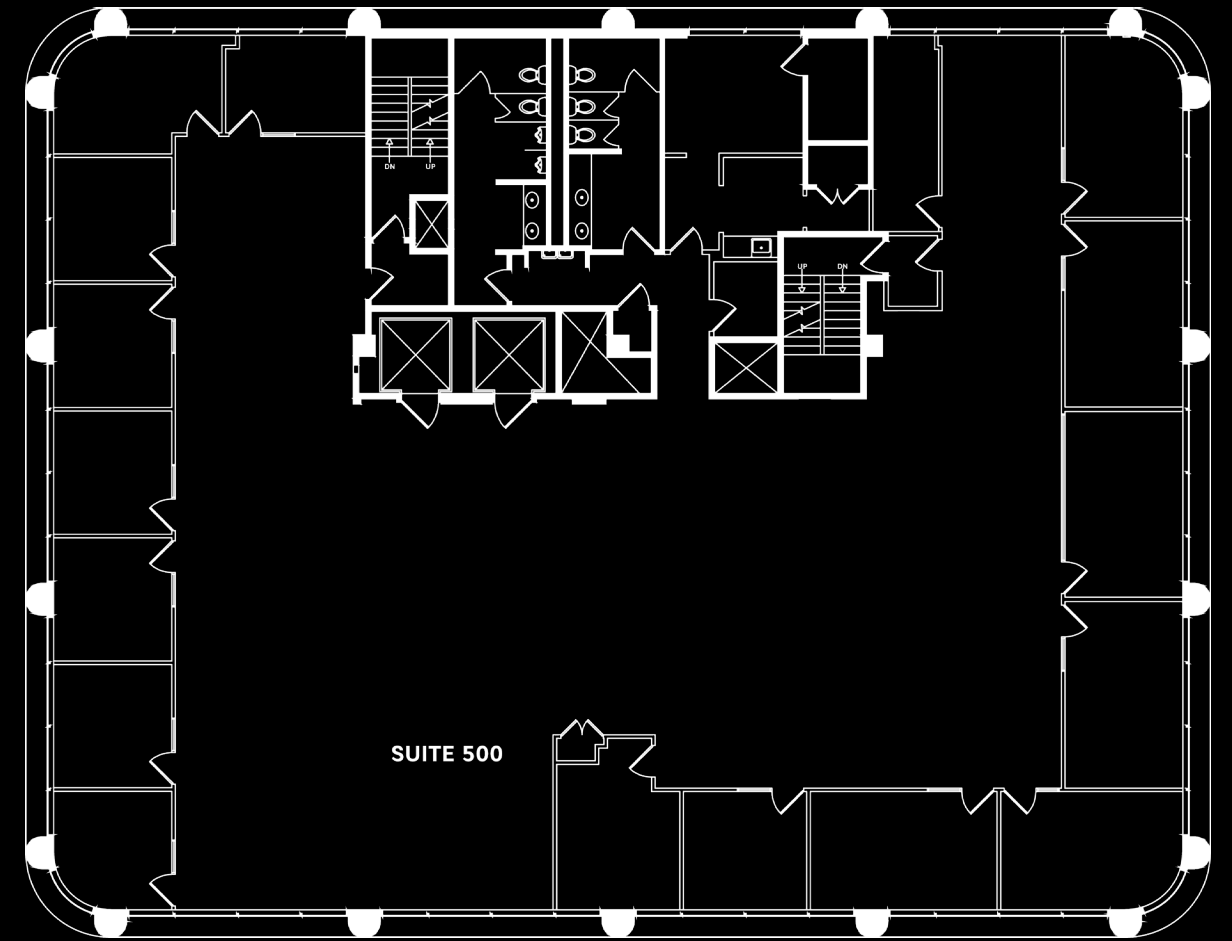
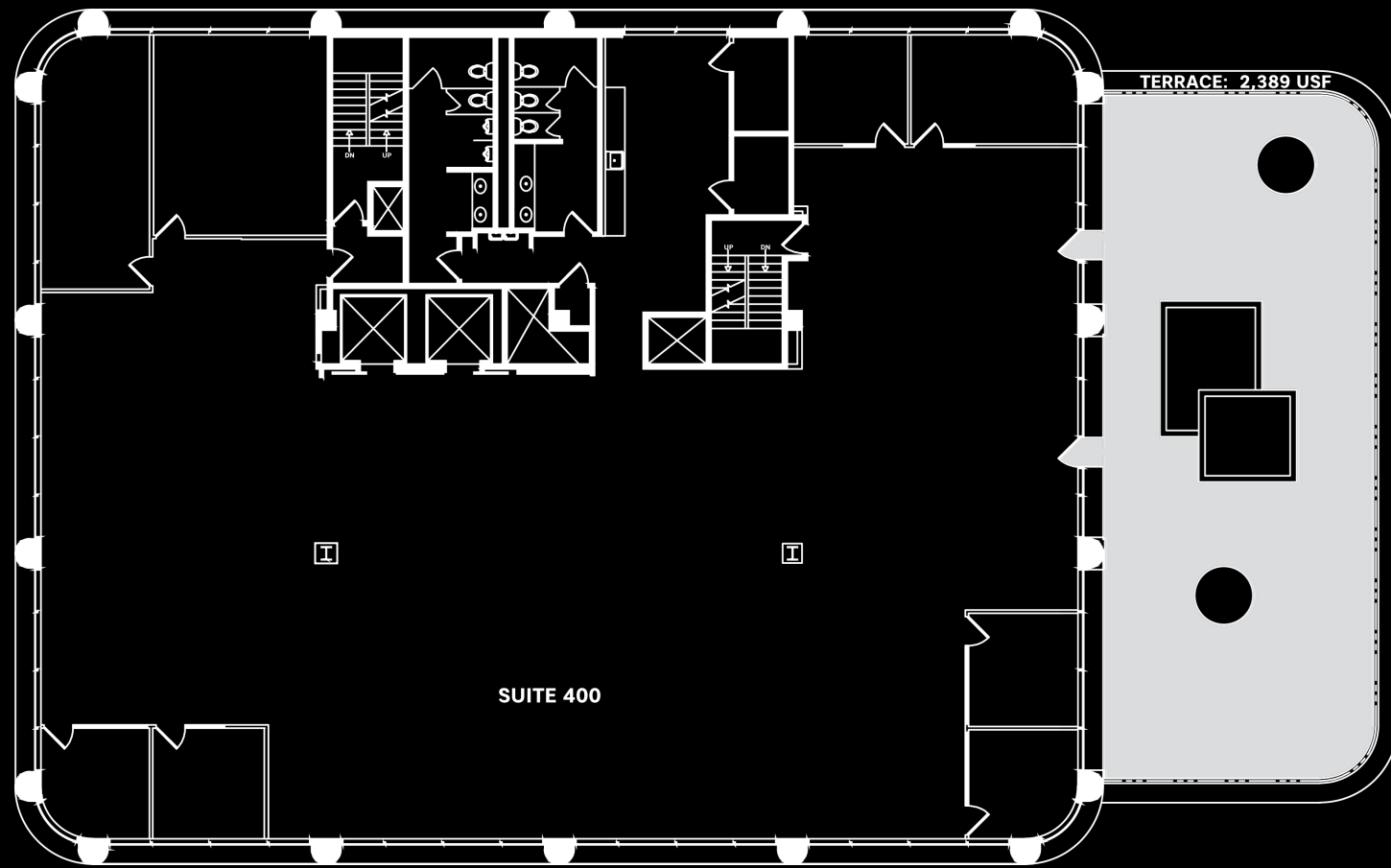
Floor 2

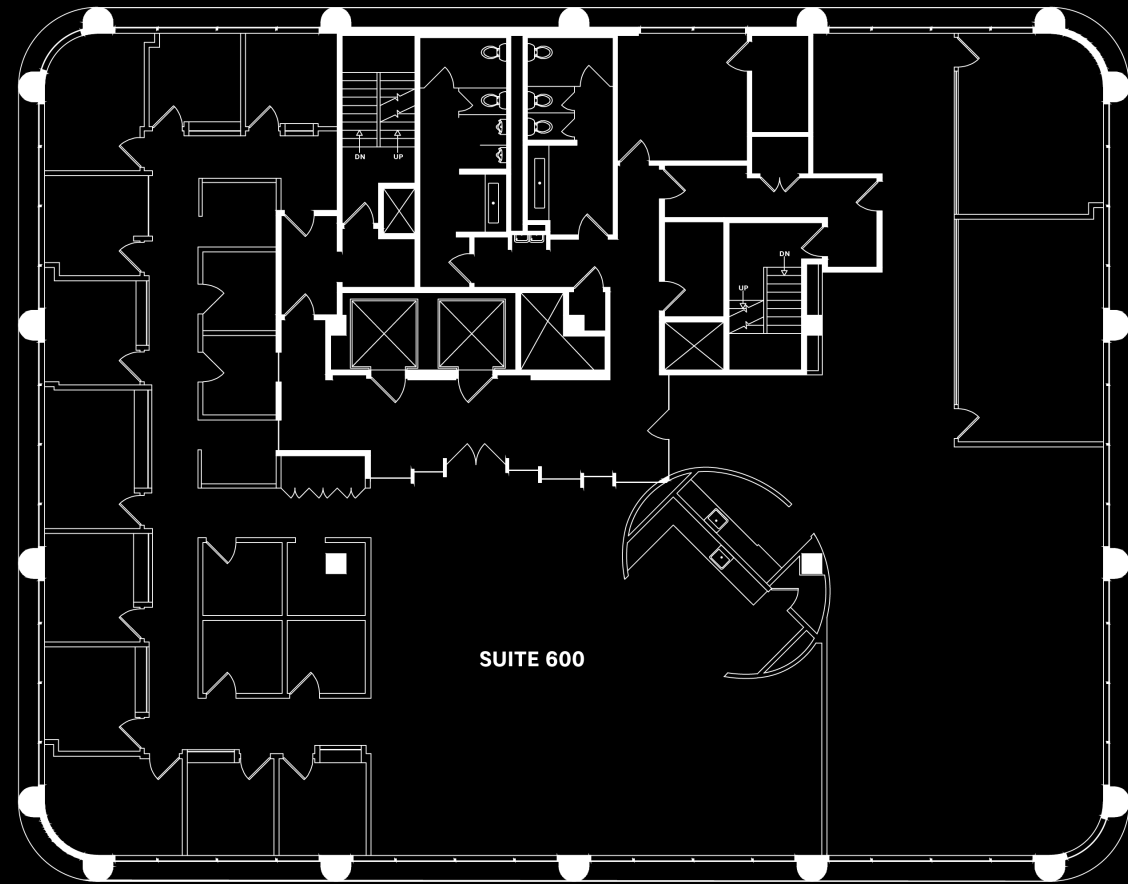
---



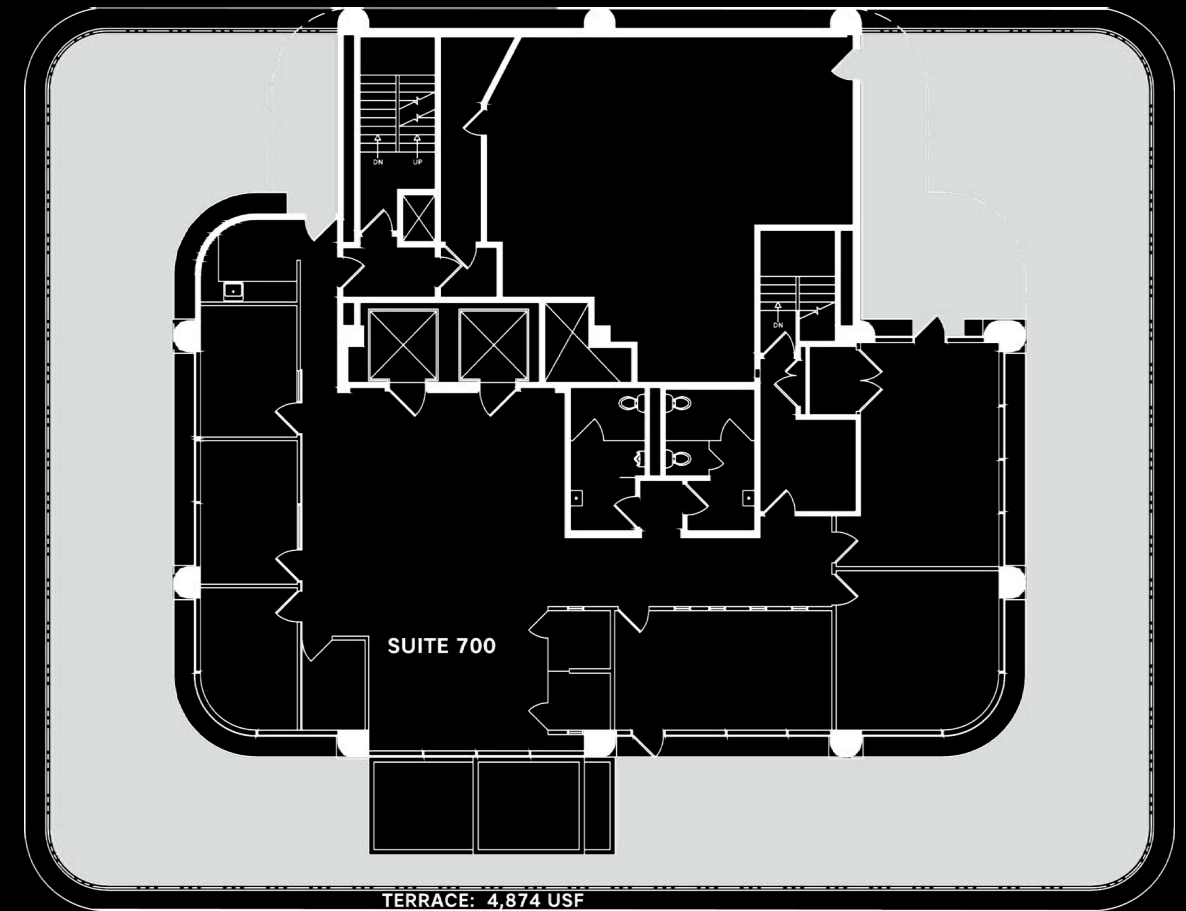
Floor 3

---





Floor 6



Floor 7

## Air

---

HVAC systems are equipped with MERV-13 filters that capture airborne particles.

Mechanical systems increase the supply of outdoor air and continuously cycle fresh, filtered air throughout the building.

Building staff are required to use low VOC emitting products including solvents, carpets, adhesives, paints, and coatings to maintain optimal indoor air quality.

## Energy

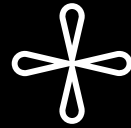
---

260 Townsend is equipped with automated control systems.

LED lighting systems are installed throughout building common areas to increase energy efficiency.

Ownership invests in capital upgrades and commissions building systems to ensure they are maximizing performance.

Variable-speed drives are installed on pumps, supply fans, and cooling-tower fans to maximize energy conservation.



## Building Health & Safety

---

Janitorial staff conduct high frequency cleaning and sanitization using green cleaning products.

Ownership provides training on emergency preparedness and workplace safety to building occupants and coordinates response drills quarterly.



## Recycling

---

260 Townsend Street deploys a color-coordinated recycling procedure to minimize waste sent to landfills.

Ownership offer free recycling training sessions to tenants.

Janitorial staff uses double-barrel waste bins to ensure waste streams remain separated and are trained annually to maintain recycling best practices.



## Water

---

Existing toilets, urinals, faucets, and showers have been upgraded with low-flow fixtures, performing above code requirements for water conservation. Building engineers review water logs daily to compare trends and identify potential water loss.



# Say Hi to our Team

**THE  
TOWNSEND**



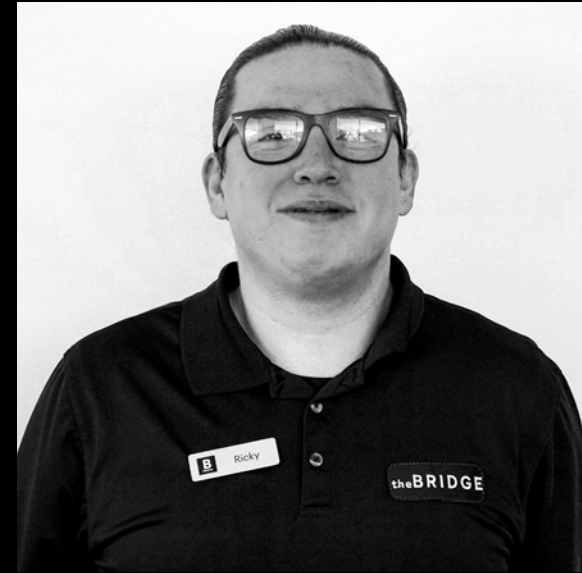
**GERI ST. CYR**

General Manager



**WILLIAM LEWIS**

Concierge



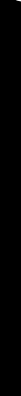
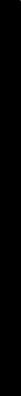
**RICKY NAVAS**

Engineering



**HECTOR RAMIREZ**

Porter





# THE TOWNSEND

260 TOWNSEND STREET  
SAN FRANCISCO, CA

the **BRIDGE**



Contact Us

---

415-371-1744

---

[BRIDGE@BRIDGETON.COM](mailto:BRIDGE@BRIDGETON.COM)

---

[BRIDGE.BRIDGETON.COM](https://BRIDGE.BRIDGETON.COM)

---

Workspace