

the **BRIDGE**



410 TOWNSEND

410 TOWNSEND STREET • SAN FRANCISCO, CA

BRIDGE.BRIDGETON.COM



Within blocks of..



OUTDOOR SPACES



TRANSPORTATION



BARS & RESTAURANTS



WATERFRONT



RETAIL SHOPS



HOTELS

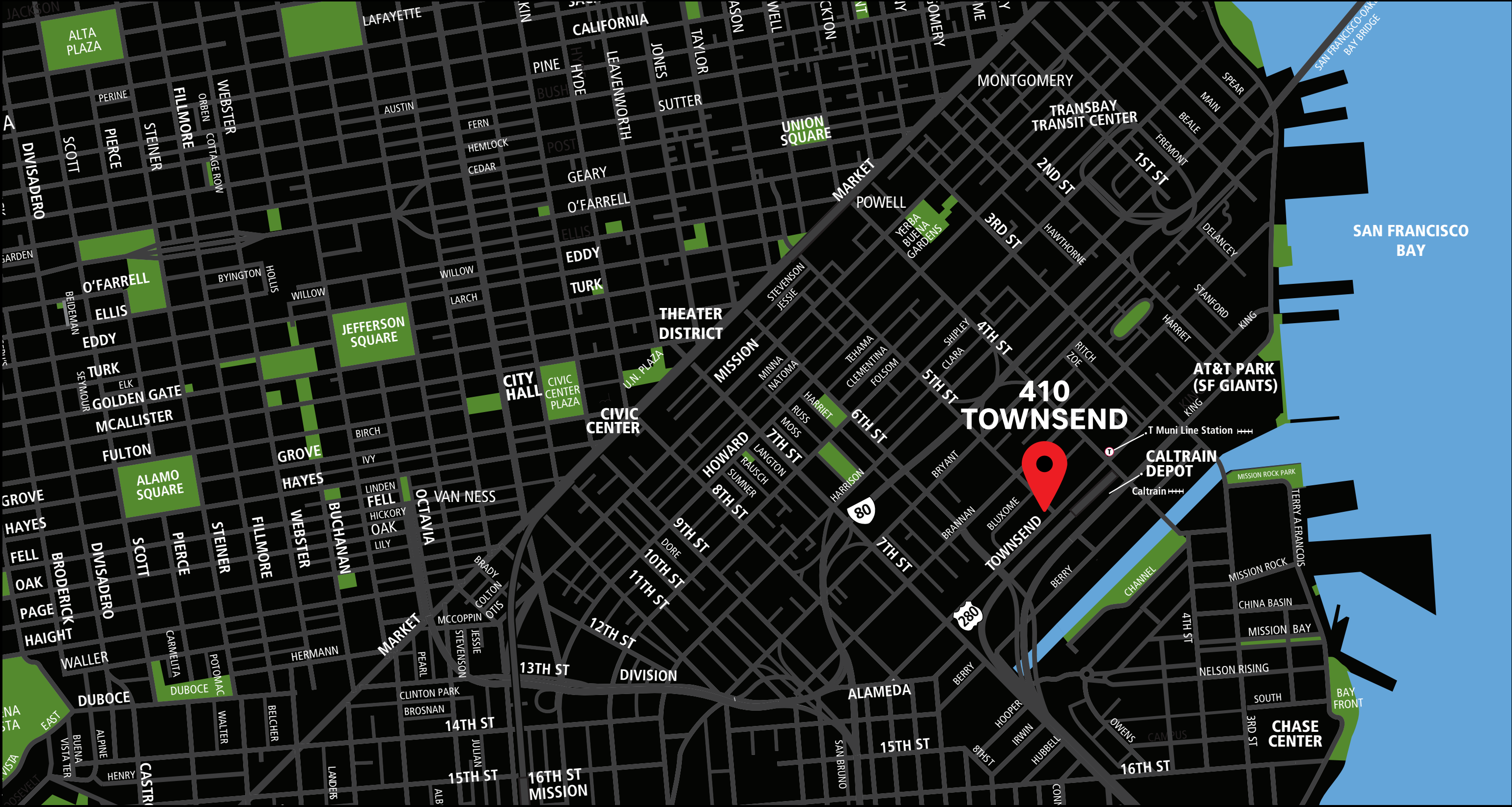
Providing the best SoMa has to offer

Situated at 410 Townsend Street in the SoMa neighborhood, this 78,000 square-foot property has over 160 feet of frontage along Townsend and Bluxome Streets. The 4-story brick-and-timber building features high-quality creative layouts, efficient floor plans, high ceilings (12 - 17 ft), HVAC, operable windows, and a subterranean parking garage with direct access to tenant suites.

Originally constructed in 1912, the building was fully converted into a creative brick-and-timber office space in 1999. The building gained recognition as the "Start-Up Village" by The Wall Street Journal, serving as the original headquarters for start-up firms such as Yammer, Eventbrite, and Zendesk. Over the years, it has also housed high-profile technology/creative firms and Fortune 500 companies like Sony, Adobe, AOL, Stripe, and Pinterest.

SONY Adobe  Pinterest stripe AOL. zendesk

All Access, the Convenience of SoMa



We are ideally located near **AT&T Park**, the new **Golden State Warriors Chase Center**, with a one-minute walk to the San Francisco **Cal Train Station** and **Muni**, where you can easily travel anywhere in the Bay Area including to Silicon Valley.



What's Next Door

LOCAL ATTRACTIONS



1379 4TH ST



1379 4TH ST



7 WARRIORS WAY



MISSION ROCK ST



24 WILLIE MAYS PLAZA



601 MISSION BAY BOULEVARD NORTH



1 WARRIORS WAY

COFFEE SHOPS



201 BERRY ST.



CAFE RÉVEILLE
610 LONG BRIDGE ST.



1155 4TH ST

RESTAURANTS & BARS



DISTRICT SAN FRANCISCO
216 TOWNSEND ST.



25 LUSK BAR & LOUNGE
25 LUSK ST.



LOCAL TAP
600 3RD ST.



ALCHEMIST BAR & LOUNGE
679 3RD ST.



500 BRANNAN ST.



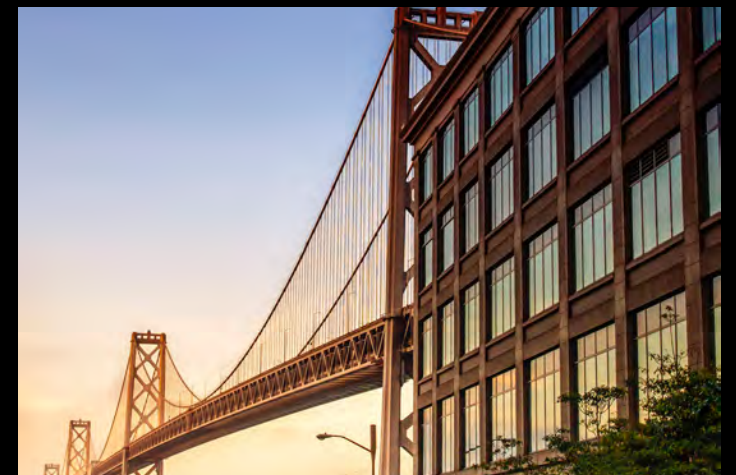
178 TOWNSEND ST.



701 3RD ST.



333 BRANNAN ST #150





Bring your business to life.

Key Features

• AMPLE NATURAL LIGHT



• EFFICIENT SIDE-CORE FLOOR PLATES



• ADJACENT TO CALTRAIN AND 80 AND 280 FREEWAYS



• PANORAMIC VIEWS OF SAN FRANCISCO SKYLINE



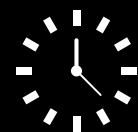
• ON-SITE PARKING GARAGE



• ELECTRIC CHARGERS

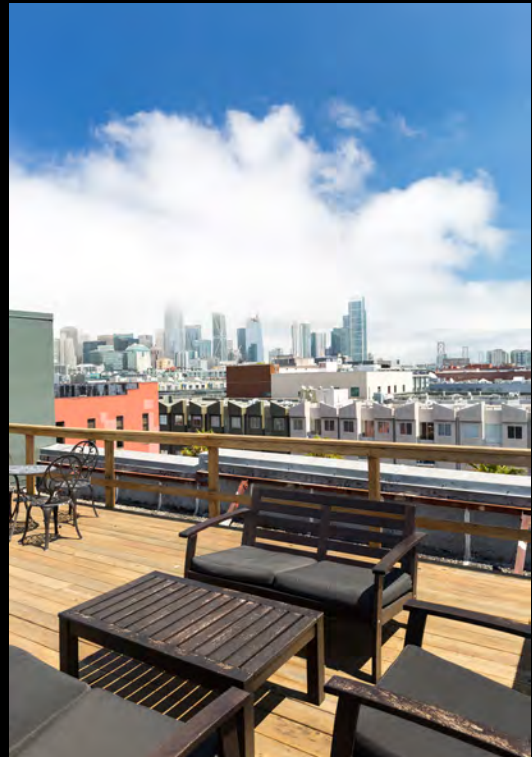


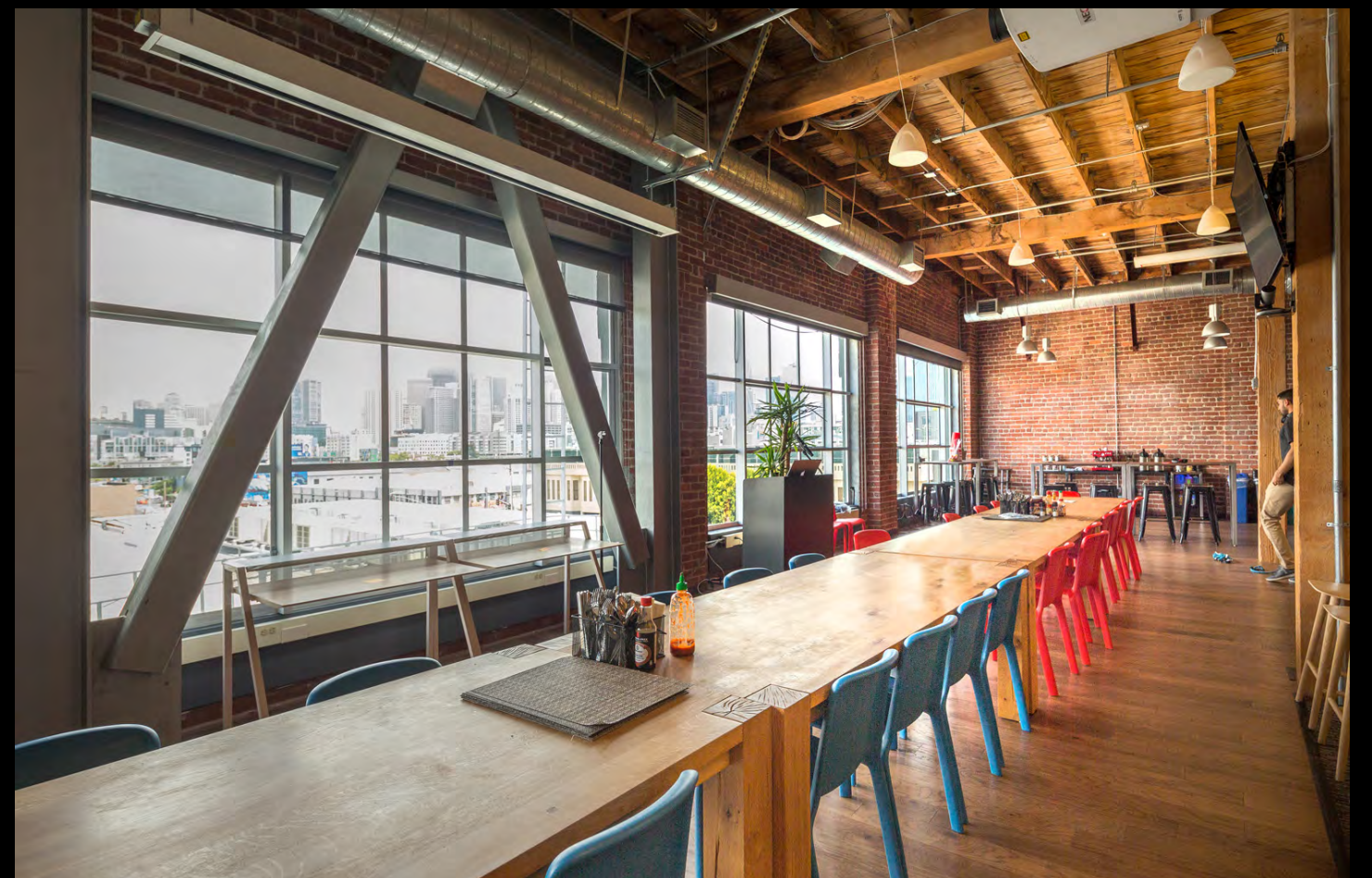
• 24/7 ACCESS

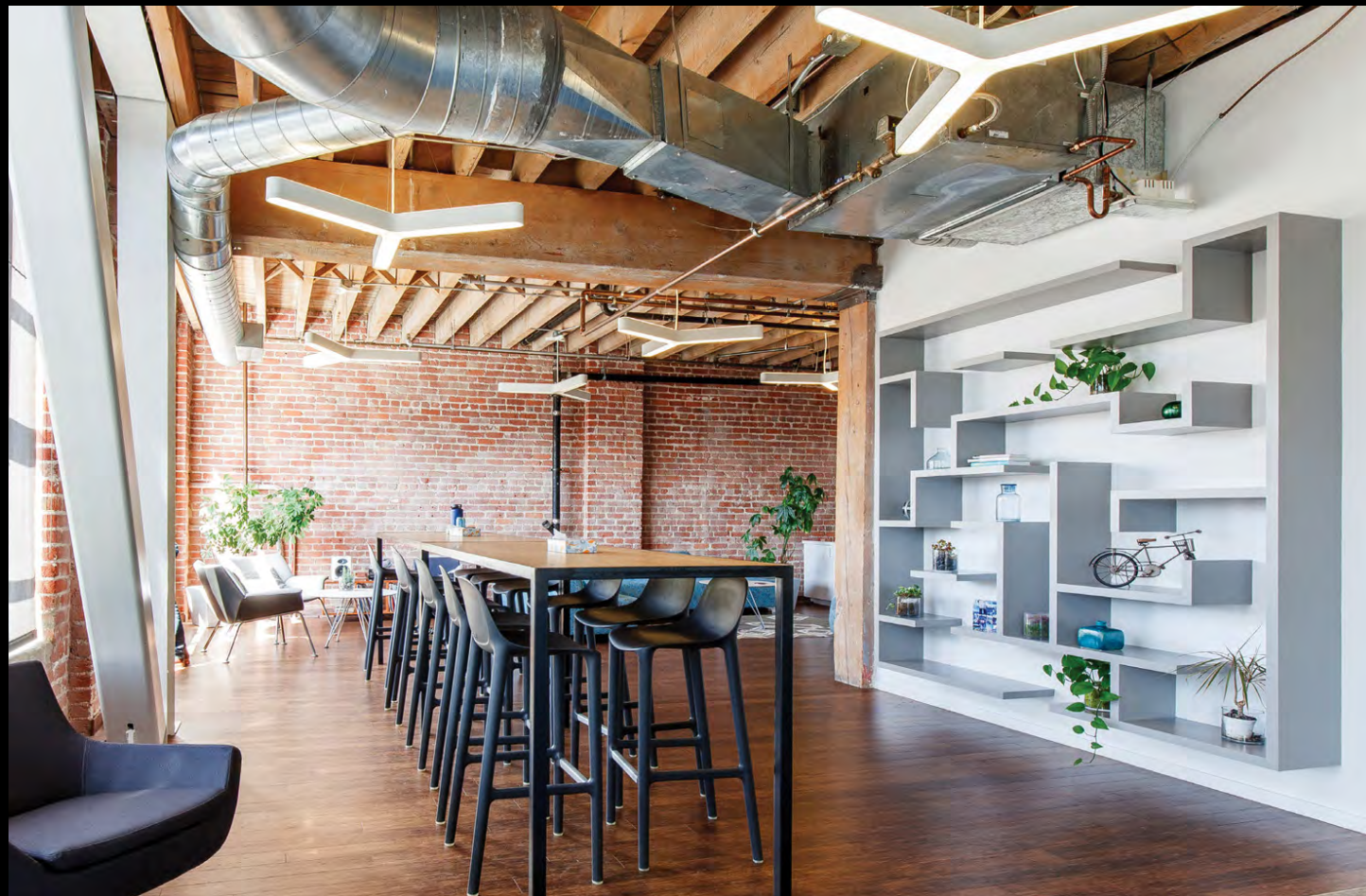


Perfect For Your Business (Needs)

Naturally lit
skyline views



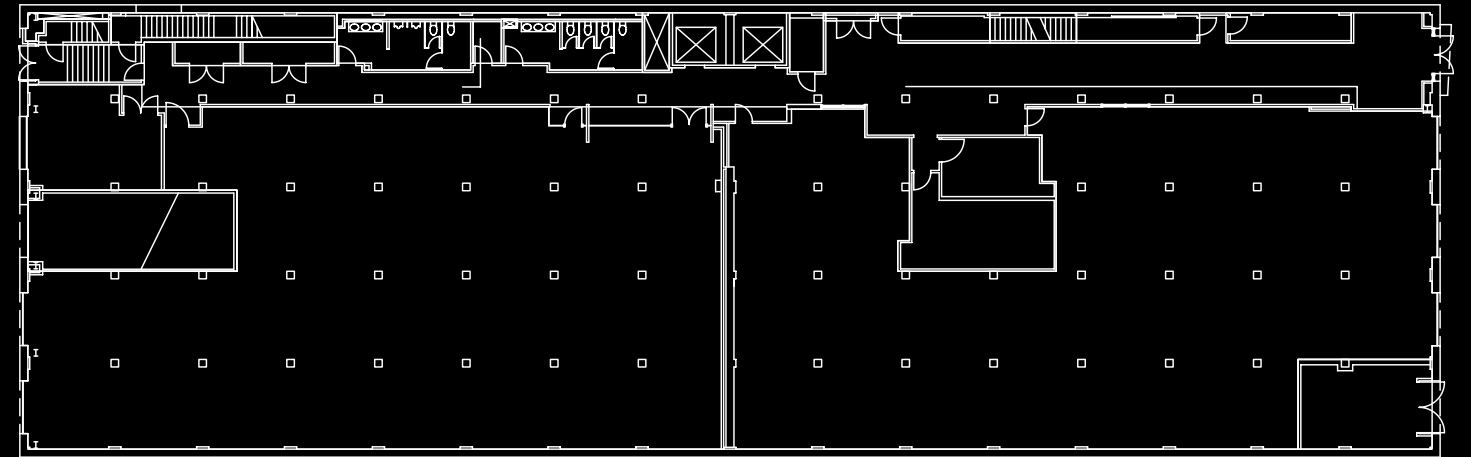






Make it
Your Own

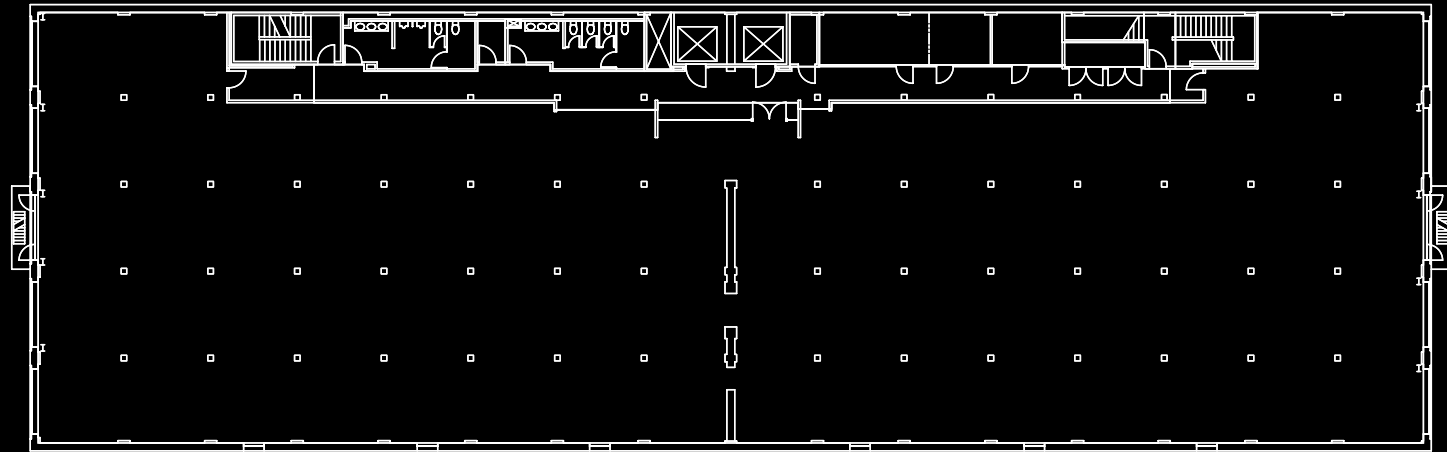
Floorplans



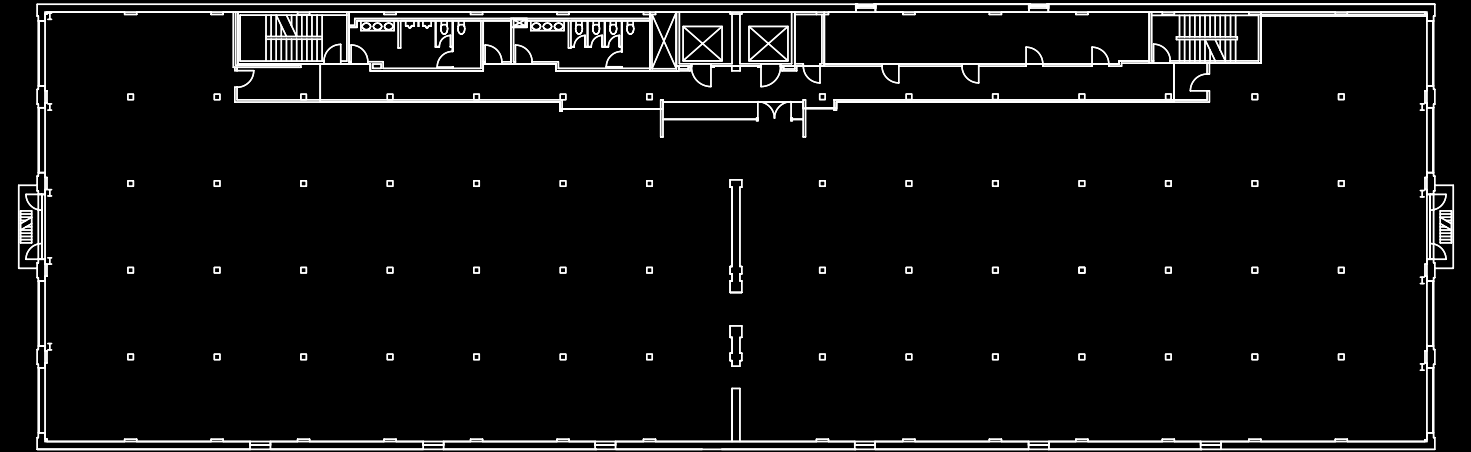
Floor 1

Floorplans

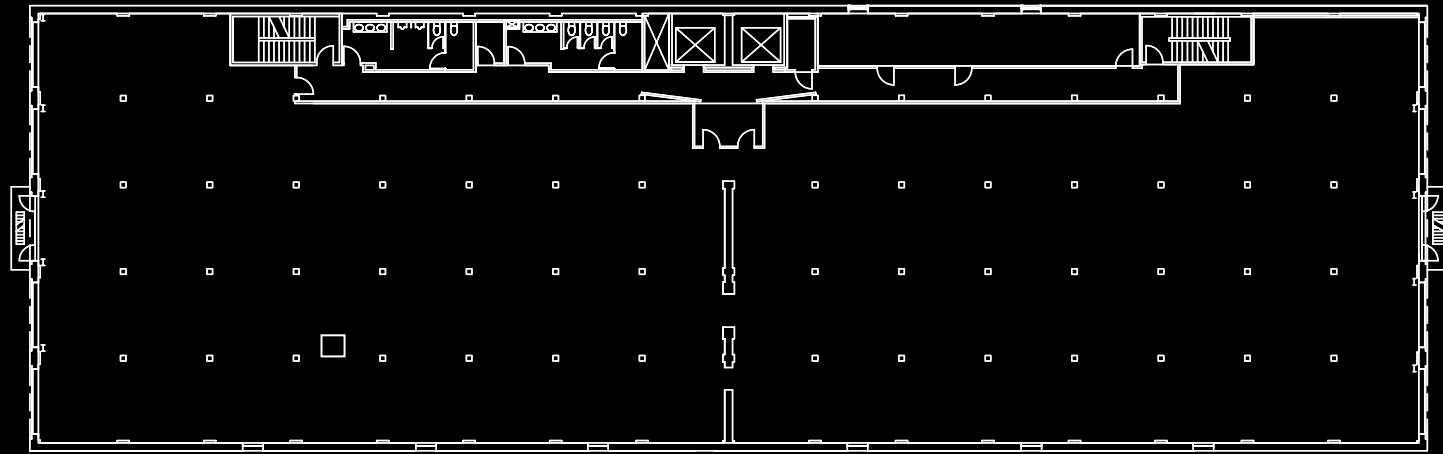
410
TOWNSEND



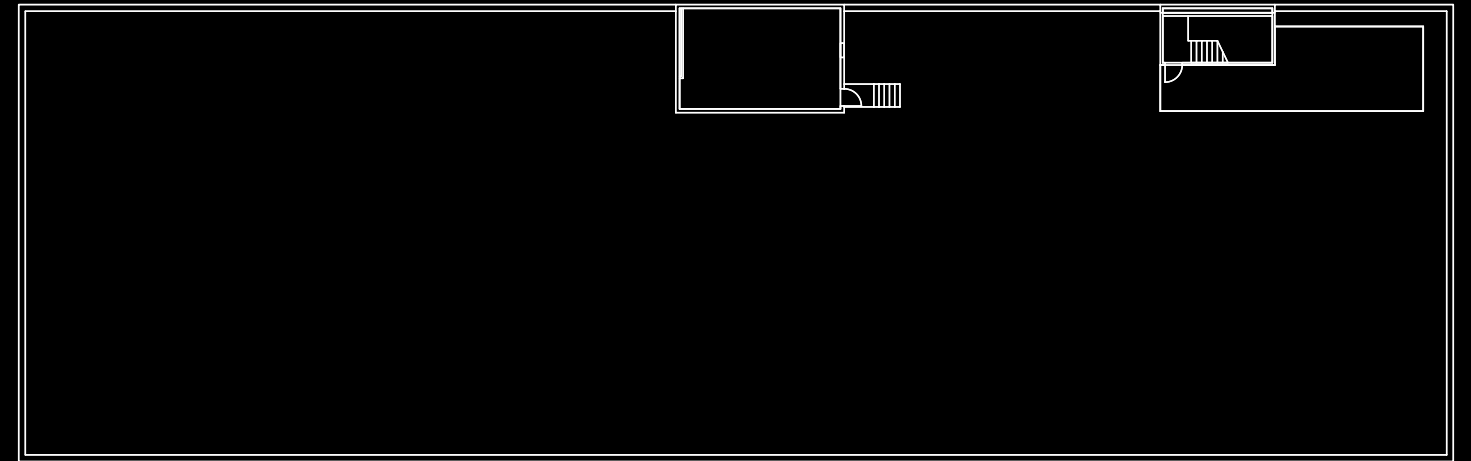
Floor 2



Floor 3



Floor 4



Roof

Air

HVAC systems are equipped with MERV-13 filters that capture airborne particles.

Mechanical systems increase the supply of outdoor air and continuously cycle fresh, filtered air throughout the building.

Building staff are required to use low VOC emitting products including solvents, carpets, adhesives, paints, and coatings to maintain optimal indoor air quality.

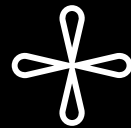
Energy

410 Townsend is equipped with automated control systems.

LED lighting systems are installed throughout building common areas to increase energy efficiency.

Ownership invests in capital upgrades and commissions building systems to ensure they are maximizing performance.

Variable-speed drives are installed on pumps, supply fans, and cooling-tower fans to maximize energy conservation.



Building Health & Safety

Janitorial staff conduct high frequency cleaning and sanitization using green cleaning products.

Ownership provides training on emergency preparedness and workplace safety to building occupants and coordinates response drills quarterly.

Recycling

410 Townsend Street deploys a color-coordinated recycling procedure to minimize waste sent to landfills.

Ownership offer free recycling training sessions to tenants.

Janitorial staff uses double-barrel waste bins to ensure waste streams remain separated and are trained annually to maintain recycling best practices.

Water

Existing toilets, urinals, faucets, and showers have been upgraded with low-flow fixtures, performing above code requirements for water conservation. Building engineers review water logs daily to compare trends and identify potential water loss.



**410
TOWNSEND**



Say Hi to our Team

KAREEMAH MARSHALL

Concierge

DAVID SHAW

Engineering

ROSIO BONILLA

Porter

the **BRIDGE**

**410
TOWNSEND**

**410 TOWNSEND STREET
SAN FRANCISCO, CA**



Contact Us

415-371-1744

BRIDGE@BRIDGETON.COM

BRIDGE.BRIDGETON.COM